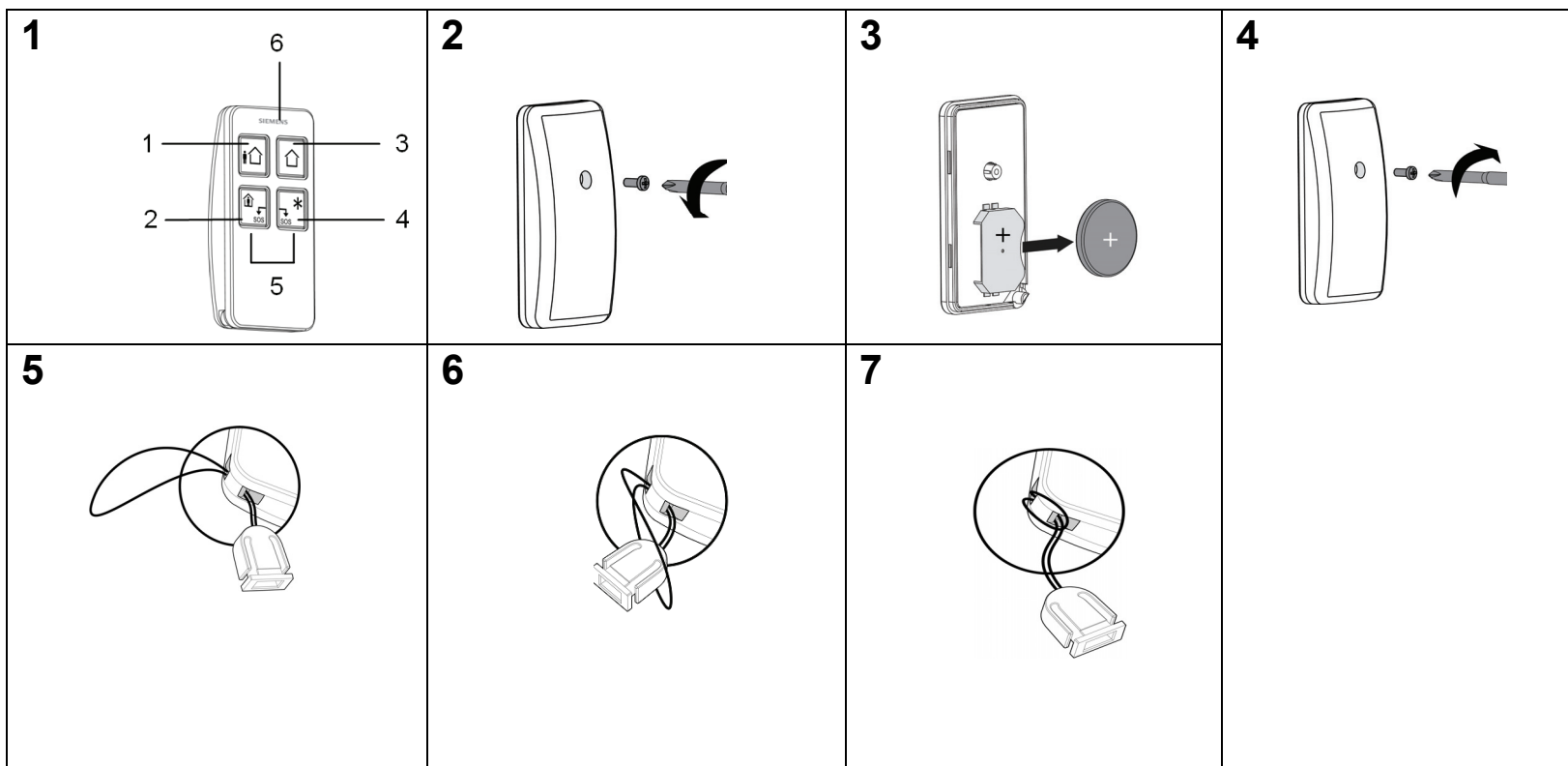


## IRCW6-11

Remote Control  
Fernbedienung  
Télécommande  
Mando de control remoto  
Telecomando  
Fjernkontroll  
Afstandsbediening  
Dálkového ovládání  
Pilot zdalnego sterowania  
Afstandsbediening  
Uzaktan Kumanda  
Fjärrkontroll

STEP: A6V10239067,  
Edition: 27.04.2009



### English Installation Instruction

**⚠** Before starting to install and work with this device, please read the Safety Instructions.

#### Enrollment and testing

To enrol the IRCW6-11 into the control panel or gateway, follow the instructions of the corresponding installation/configuration manual.

Since IRCW6-11 is supplied with the battery already installed, the unit is practically ready to be tested.

- > Press a key on the IRCW6-11: verify that the transmit LED lights.
- > Make sure that the control panel responds as programmed and as stated in the installation/configuration manual.
- > Repeat the test at locations where the remote control will be operated under normal use, in order to ensure the wireless transmission is not blocked by any walls or large objects, or affected by structural materials.

#### Functions (fig. 1)

Symb.	No.	Key/Indicator.	Description
	1	ARM	Sends a Set (ARM) command to alarm system.
	2	STAY	Sends a Part Set (STAY) arm command.
	3	DISARM	Sends an Unset (DISARM) command.
	4	Additional Function	Activates an assigned function (e.g. light, garage, door, etc.).
	5	PANIC/SOS	These two buttons pressed together for 2 seconds send a PANIC alarm.
	6	Indication Light	Lights up when transmitting, flashes if battery is low.

#### Leash insertion (optional, fig. 5-7)

You can clip the leash into a key ring or neck band.

#### Battery exchange (fig. 2-4)

In order to change the battery, open the housing (Fig. 2) with a screw driver, cautiously remove the old battery and replace it with a new one and close the housing again (Fig. 3&4).

- ⚠** Insert the battery in the battery holder making sure the polarity is correct (+) (-).
- ⚠** Risk of explosion if battery is replaced by an incorrect type.
- ⚠** Clean the remote control only with a soft cloth or sponge moistened lightly with a mixture of water and mild detergent and wipe it dry immediately. Also never use solvents such as kerosene, acetone or thinner. The use of abrasives of any kind is strictly forbidden.

#### Technical data

Data protocol	SiWay	
Wireless range	100 m in open space	
Frequency band	868 MHz	
Identification	Unique ID serial number – 24 bit	
Control transmission	Arm, Stay, Disarm, Optional Control, Panic	
Power	Automatic Power Saver – Low Bat Indication (LED flashing) below 2.4 V	
EMI rejection up to 2 GHz	> 10 V / m	
Battery	Battery Lithium 3 V - type: CR2032	
Current consumption	Standby: < 1µA	max.: < 28 mA
Environmental conditions:		
Operating temperature	-10 to +50 °C	
Storage temperature	-20 to +60 °C	
Humidity (EN60721)	< 85 % r.h., non condensing	
Housing protection EN60529, EN50102	IP41 / IK02	

Complies with : EN 61000-6-3, EN 55022 Kl. B, EN 50130-4+A1+A2, EN 50371, EN 60950-1, EN 300220-3, EN 301489-3

For more detailed instruction please refer to the manuals of the respective control panel or gateway.