

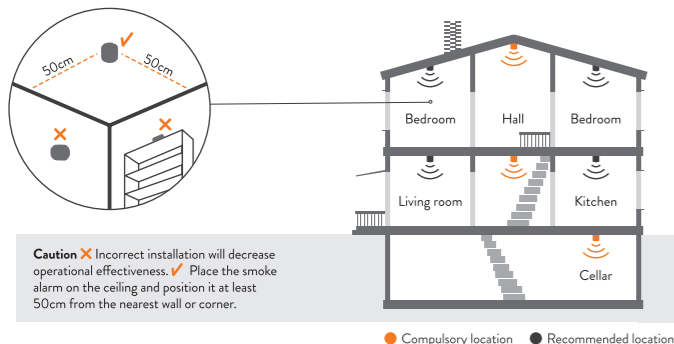
SK-20 INSTALLATION INSTRUCTIONS

Thanks for buying the Sentek photoelectric smoke alarm. Read all instructions before installing the smoke alarm, so it will protect your home in the best possible way.

- If you are installing the smoke alarm for some other person, leave these instructions or a copy of them with him/her.
- The Sentek photoelectric smoke alarm is also suitable for use in a travel vehicle, such as camper vans, caravans, and boats.

1. POSITIONING THE SMOKE ALARM

- Place at least one smoke alarm per 60 m² on each floor.
- Place a smoke alarm in each corridor and bedroom.
- The smoke alarm is to be placed on the ceiling in such a way that it is in the middle of the room.
- Place a smoke alarm at the top of each staircase.



AVOID THESE POSITIONS:

Near a wall or corner: Place the smoke alarm at a distance of at least 50 cm from a wall or corner.

Moist places: Avoid installing smoke alarms near moist or occasionally moist places such as immediately close to a shower or kitchen, where steam can cause false alarm.

Ventilation ducts: Avoid installing a smoke alarm immediately next to a ventilation duct. The draft may prevent smoke from reaching the smoke alarm. Smoke alarm can't be installed in the location where the air velocity is more than 300 ft/min (1.5 m/sec).

Dead-air spaces: Avoid installing a smoke alarm in the angle of a pitched roof. Install it at a distance of at least 10 cm from the ridge.

Fluorescent lamps: Avoid installing a smoke alarm immediately next to fluorescent lamps, such as halogen lights.

Radiation heating source: Avoid installing a smoke alarm radiant heat ing source, such as radiant heating in the ceiling can create a hot air boundary layer along the ceiling surface, which can seriously restrict the movement of smoke and heat to a smoke alarm.

2. OPERATION AND TESTING

Alarm mode: The red light flashes once every 344 seconds in normal mode. When the smoke alarm detects smoke, it goes into an alarm mode in which the smoke alarm beeps continually and red light flashing.

Test mode: The entire surface works as a test button. Press the test button of the smoke alarm for more than 1 seconds, until you hear the alarm sound and see light flash. Loosen the button the smoke alarm will go into silence mode (9 minutes).

Silence mode: During alarm mode, pressed the test button for 1 seconds, the smoke alarm is immediately reset out of the alarm condition and the beep is silenced when the test button is released the device enters into a 9 - minute silence mode. In silence mode, the red light flash once every 10 seconds to indicate that the mode is active. The silence mode will be cancelled if any of the following conditions exist:

- high smoke lever.
- test button is activated again.

Error mode: The smoke alarm sends out 'beep' three times every 43 seconds. Removed the smoke alarm from the mounting plate and clean up the surface dust, then install the back. If the smoke alarm is still in an error mode, contact the importer or manufacturer.

Low battery: When the battery is used up, the smoke alarm beeps at intervals of 43 seconds. You can silence the beep by press the test button for 3 seconds, in the 3 seconds the red led on and the beep on, after the 3 seconds you should release the test button, and the 'beep' prompt is silenced for 8 hours. Pressed the test button for 3 seconds then released, the smoke alarm will also enters into 9 - minute silence mode. At the end of the 8 hours, the audible indication will resume if the low battery condition still exists.

Local Alarm Memory: If the smoke alarm into alarm mode, will enter the 24 hours local alarm memory after exit alarm mode. In local alarm memory condition, the green light flash three times spaced 1.3 seconds apart, this pattern will repeat every 43 seconds, this visual indication will stop after a period of 24 hours. You will still be able to identify a unit with an active alarm memory by pressing the test button. When you pressed test button, the 'beep' sound will be once every 0.25 seconds, loosen the test button, it will withdraw from the local alarm memory condition. The initial 24 hours visual indication is not displayed if the smoke alarm in the low battery condition.

End of life indicator: After 10 years of operation, an audible warning signal occurs to indicate that the smoke alarm should be replaced. This indicator will be similar to the error mode warning that the smoke alarm sends out 'beep' three times every 43 seconds.

3. MAINTENANCE

Battery life: The smoke alarm contains 3V lithium battery (CR123A). Their lifetime is 10 years. When the battery is used up, the smoke alarm beep at intervals of 43 seconds for at least 30 days. If the battery is used up, replace smoke alarm as soon as possible.

Warning: Lithium batteries can explode or cause burning if they are installed incorrectly. User is not recommended to replace batteries.

Clean the smoke alarm at least once a year: Separate the smoke alarm from the installation plate by turning it counterclockwise. Separate the smoke alarm carefully. Test the smoke alarm after cleaning it.

Do not paint or modify the smoke alarm!

Waste handling: The smoke alarm should be disposed in accordance with normal waste handling for electronics.

4. TECHNICAL INFORMATION

Operating principle: Photoelectric	Voltage: 3V (built-in lithium battery)
Warranty: 5 years	Quiescent current: < 3uA
Alarm current: < 200mA	Operating temperature: 0°C~ 45°C
Sound volume: ≥ 85 dB at a distance of 3 meters	
Dimensions: 42.5 × Φ50.8mm	Weight: 54 g
Holding temperature of 3M attachment tape -35°C~ 93°C	
Maximum humidity: 93%	Conform to the standard: EN14604

5. GUARANTEE

Sentek grants a 5 years guarantee, starting from the purchase date of the product. If the smoke alarm becomes defective during the guarantee period, the smoke alarm will be replaced with a new one if the defective one is sent to Sentek. The guarantee covers manufacturing or material defects in the product, if the smoke alarm has been used according to the user instructions and the guarantee period has not expired. The guarantee period for a smoke alarm that has been replaced with a new one is the same as that of the original smoke alarm. The guarantee is not valid if 1) the product is used, maintained, or tested contrary to the user instructions, 2) the defect has been caused by a negligent act by other than Sentek, or 3) if the product has been modified or treated with force, or if the guarantee receipt is missing. The guarantee does not cover costs due to installation or battery replacement. Sentek responsibility does not in any case exceed the price of a new smoke alarm. Sentek is not responsible for any damage or loss that has been caused by a non-working smoke alarm or negligence by the manufacturer. This guarantee does not affect rights enacted by law.

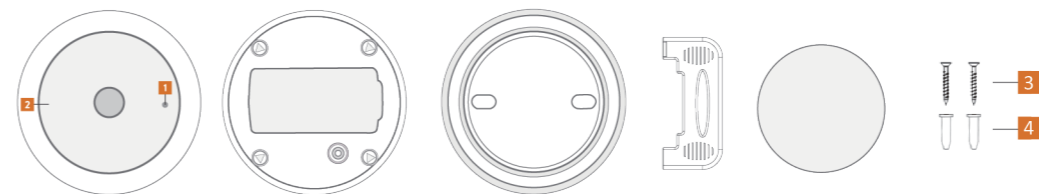
Manufacturer: Sentek Electronics Co., Ltd

#448 Yingchun road, Wangchun Industrial Park, Ningbo City 315175, Zhejiang, China

Tel: 86-574-8715 3117 Fax: 86-574-8715 5951

E-mail: sales@sentek.cc Http://www.sentek.cc

6. PRODUCT COMPONENTS DRAWING



1 red and green double color indicator LED

2 Test button

7. INSTALLATIONS

A smoke alarm can be installed in two different ways:

(1) Quick installation with 3M double-sided tape or (2) by installing the smoke alarm with screws.

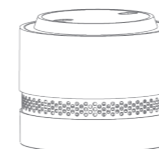
Note: Installation with 3M two-sided tape is not approved according to Great Britain's LPCB standard.

(1) QUICK INSTALLATION WITH 3M DOUBLE-SIDE TAPE

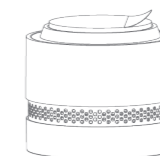
Make sure that the installation surface is even and cleaned thoroughly. If the ceiling is uneven surface or rough in texture, install the smoke alarm with the screws supplied.



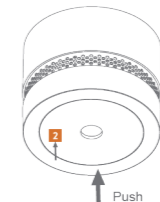
1) Activate the smoke alarm by pushing the mounting plate and turning it clockwise at the same time. The smoke alarm is activated and ready to be installed when you feel clicks. you may also hear an alarm sound if the test button gets pressed during activation.



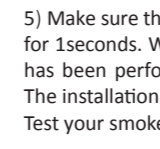
2) Remove the white cover on the double sided tape, then paste on the mounting plate.



3) Remove the red cover on the double-sided tape.



4) Attach the smoke alarm by pressing it firmly against the ceiling for approximately 60 seconds. You may also hear an alarm sound if the test button gets pressed during installation.

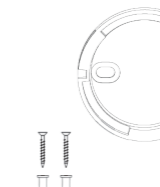


5) Make sure that the smoke alarm is activated by pressing the test button for 1 seconds. When the smoke alarm gives an alarm sound, the testing has been performed successfully and your smoke alarm is ready for use. The installation is now complete. Test your smoke alarm weekly!

(2) INSTALLATION WITH SCREWS



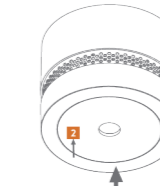
1) Remove the mounting plate of the smoke alarm by turning it counterclockwise and lifting it away.



2) To achieve the correct smoke alarm positioning, then mark drill holes for the screw anchors. install the mounting plate of the smoke alarm tightly to the ceiling with the screws.



3) Press the smoke alarm against the mounting plate and turn it clockwise until you feel clicks.



4) Make sure that the smoke alarm is activated by pressing the test button for 1 seconds. When the smoke alarm gives an alarm sound, the testing has been performed successfully and your smoke alarm is ready for use.

The installation is now complete. Test you smoke alarm weekly!

