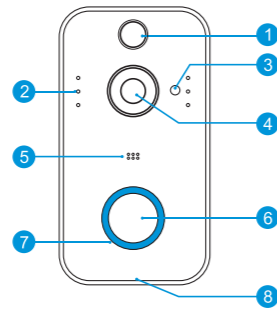


Video Doorbell User Manual

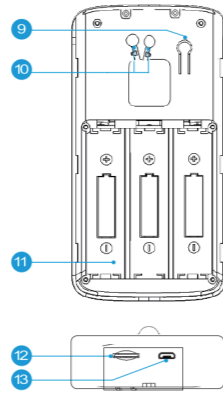
Wi-Fi · 720p HD · Two-way Audio

V1.0

The Basics



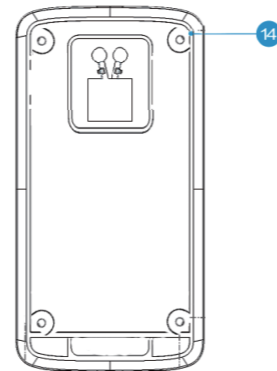
- 1. PIR Motion Sensor
- 2. Infrared LED x 6
- 3. Light Sensor
- 4. 166° HD Camera
- 5. Microphone
- 6. Push Button
- 7. LED Indicator
- 8. Speaker



- 9. Reset Button
- 10. AC Input
- 11. Battery Compartment
- 12. TF card
- 13. USB Interface

1

Mounting Bracket



14. Fixed Hole

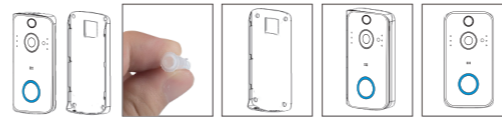
In The Box



2

Installation Guide

As shown in the figure, take back



- 1 Use the screws in the mounting kit to fit the bracket on the wall
- 2 Connect the external power cord to the AC external power supply hole
- 3 Mount 3pcs 18650 batteries
- 4 Press the reset button for 5 seconds, waiting for the indicator light to slow down (The equipment should be in working condition, long press, sleep state is invalid)
- 5 Cover the battery cover, align the equipment and the bracket, push down and lock the security screws to complete the installation

Setup Device

Thank you for choosing our products! Please follow the below instruction to setup and using your doorbell device.

1 DOWNLOAD APP

- Download "Onecam" Via "Google Play" "Apple store" QR Scan below QR code download "Onecam" APP
- Then register and login the app

to receive notifications please allow all notification rights

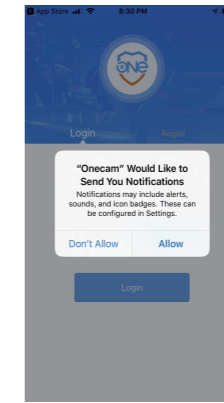


Scan Code Download Onecam APP

3

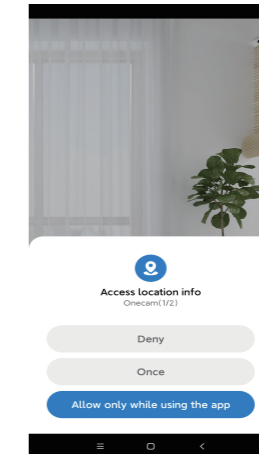
2 iPhone users (operation steps)

Allow "Onecam" to send your notifications



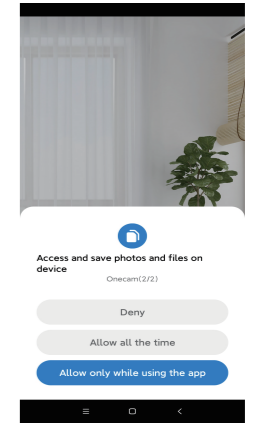
Android users (operation steps)

1. Allow Onecam to access device's location info

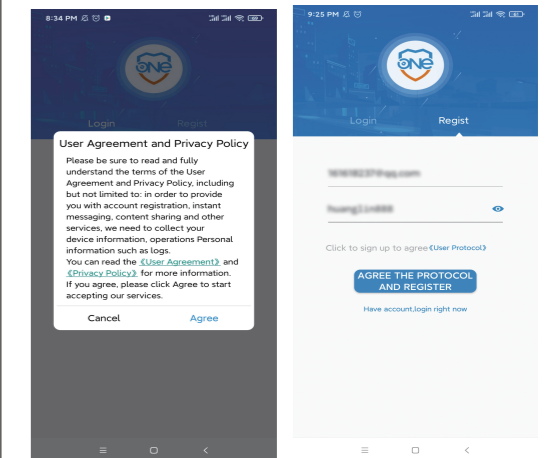


4

2. Allow Onecam to access and save photos and files on device



3. Agree User Agreement and Privacy Policy
4. Agree the protocol and register.

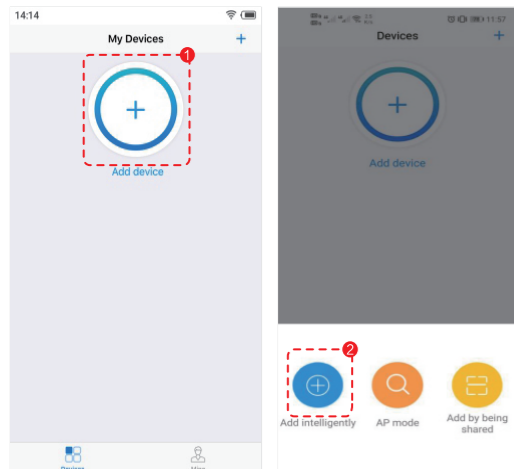


5

75*150mm

3 SETUP DEVICE

- Login to the app, Click one "+" of the app and select Add intelligently to proceed to the next step
- ***TO RECEIVE ALL NOTIFICATIONS, PLEASE ALLOW ALL NOTIFICATION RIGHTS!***



6

The device is powered on. Wait for the device indicator to be steady red. (If the indicator is not steady red, please wake up the device by pressing the reset button. When the indicator is steady red, release the reset button.) Click "Next step", follow the instructions of the APP until the status of the light changes to blue light flashing, indicating that the device is successfully connected to the network and can be used.

Device connection guide

After power-on, follow the instructions
After power on the device, press and hold reset button on the device backside until you see the indicator light is steady red.



The indicator light is steady red.
Did not see steady red indicator light?

Connect WLAN



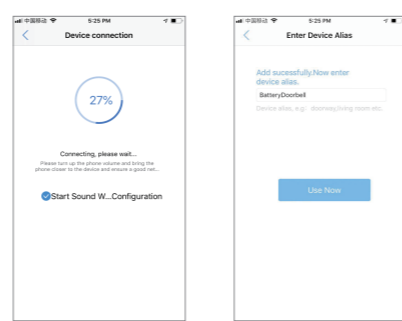
Fill in the wireless network to connect
Current device 5G WiFi is not supported

WIFI network name: smaphus
Enter WIFI password: *****
Remember

7

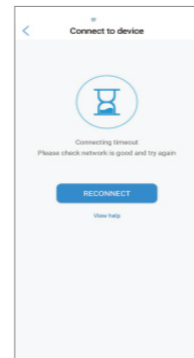
When the password is entered correctly?

If the password is entered correctly, and a piece of music will appear when the interface is buffered, and the interface will also prompt that the connection is successful.



When the password is entered incorrectly?

If the password is entered incorrectly, and a piece of music will not appear when the interface is buffered, and the interface will also prompt you check network is good and try again.

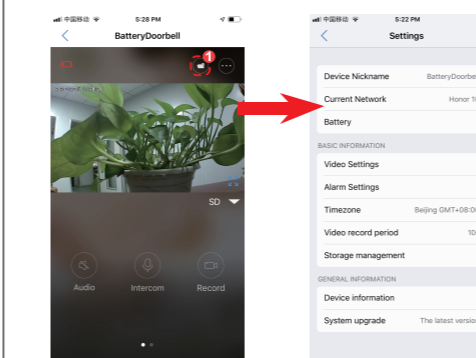


8

4 VIDEO QUERY

Where can check whether App permissions are enabled?

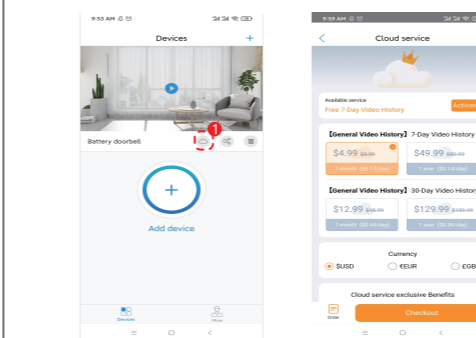
- Click the "File" icon to view the video in the card (Note: The device need to insert the TF card. Turn on the alarm detection and record the video before you can query the video file)
- On the doorbell video display interface, there are three dots in the upper right corner. After clicking to enter interface is the permission setting interface of the App.



5 CLOUD STORAGE VIDEO

- Click the cloud storage feature icon on the device list page. Enter the cloud storage video query and purchase page.

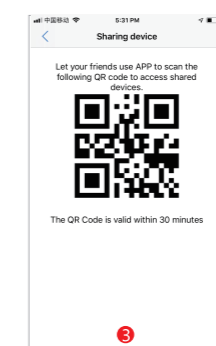
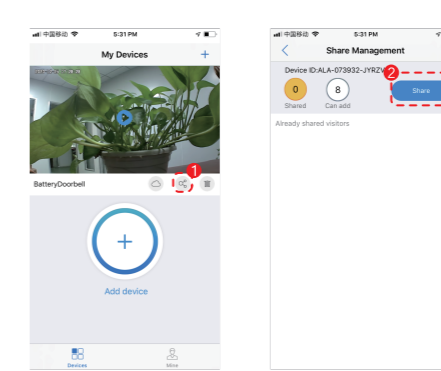
Cloud Service Package Type
General Cloud Service package type price:
7-Day video history for 1 month: \$ 4.99 € 4.99 £ 3.99
7-Day video history for 1 year: \$ 49.99 € 49.99 £ 39.99
30-Day video history for 1 month: \$ 12.99 € 12.99 £ 9.99
30-Day video history for 1 year: \$ 129.99 € 129.99 £ 99.99



9

6 DEVICE SHARING

Click the "Share" icon, enter "Share Management", click the "Share" button. Your family members can click the "+" of the app to select "Scan Add" to scan the QR code of the sharing device, then share your device.



10

SPECIAL NOTES!

- (1) The device is equipped with a rechargeable lithium battery. The battery life will be affected by the device wake-up time and the number of wake-ups. Therefore, the PIR sensor alarm detection function is used in an environment with a lot of people. It is recommended to turn off or set the device to low sensitivity to reduce device wake-up and call times extend battery life. When the battery is low, please charge the battery immediately.
- (2) Keep the device in range of your router. Make sure the device is placed close to the Wi-Fi router. If there has to be thick or insulated objects between the device and the Wi-Fi router, which may lead to weak Wi-Fi signal, please make sure the Wi-Fi signal is in good level before you start using the device.
- (3) It is a delicate device with low power consumption design. Everytime the device is awakened and will work for few seconds. After that, the device will enter standby mode to save power. You can set the work time in the app settings.
- (4) If android phone not receive the notifications, because android system blocked, it need open the app's self-starting function in your phone to receive push messages.
- (5) This device provides one month of free cloud storage and face recognition services. If you need to continue using value-added services after the trial period expires, you need to purchase them in the app.

Technical Specification

Resolution	Full HD
Field of Angle View	166°
IR LED	6*850mm
Wi-Fi	IEEE 802.11 b/ g/ n
Audio	Two-way talk with noise cancellation
Recording	Device SD Card recording(20 seconds)
Storage	Cloud storage or 8G/16G/32G TF Card
Battery	18650 specification batteries (Not Included)
Device Wakeup	Device Button, Motion Detection, Remote Live View
Power Consumption	3 pcs 18650 lithium battery
Monitoring	Within 600ms
Notifications	Power Consumption Standby 200uA, Working 170mA
Waterproof level	IP54

11

75x150mm