

# **GSM/GPRS/GPS Portable Tracker User Manual**



In order to protect the environment and provide timely up-to-date information about your tracker, we have made electronic user manual.

To download your electronic user manual, please visit our website: [www.baanooliot.com](http://www.baanooliot.com)

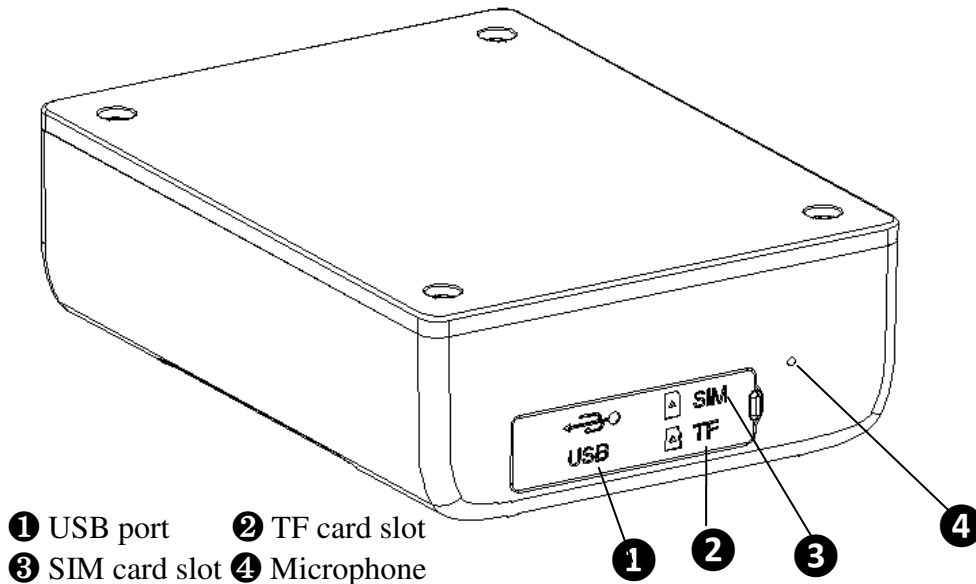
# Contents

<b>1. SPECIFICATIONS</b>	<b>2</b>
<b>2. HARDWARE DESCRIPTION</b>	<b>2</b>
<b>3. QUICK CHARGER</b>	<b>2</b>
<b>4. INSERT SIM CARD, TURN ON THE DEVICE</b>	<b>3</b>
<b>5. DEVICE STATUS LIGHT</b>	<b>3</b>
<b>6. MOBILE APP</b>	<b>4</b>
<b>7. BAANOL IOT'S WEB VERSION</b>	<b>5</b>
<b>8. GPRS CONFIGURATION FOR LIVE REAL-TIME TRACKING</b>	<b>6</b>
8.1 APN SETTING	6
8.2 CONFIGURE USER NAME AND PASSWORD OF GPRS	6
8.3 CONFIGURE DOMAIN NAME AND PORT	7
8.4 GPRS MODE	7
<b>9. FUNCTION DETAILS</b>	<b>7</b>
9.1 CHANGING PASSWORD	7
9.2 AUTHORIZATION	8
9.3 SINGLE TRACKING	8
9.4 SLEEP TRACKING STRATEGY	9
9.5 SMART ANGLE UPDATING	11
9.6 GPS DRIFT SUPPRESSION	11
9.7 LOCATION BASED SERVICE (LBS) / CELL-ID TRACKING	12
9.8 LISTEN	12
9.9 FORWARDING INCOMING SMS MESSAGES	12
9.10 SIM CARD BALANCE ENQUIRY	13
9.11 ALARMS	13
9.12 CHECK STATUS	15
9.13 CHECK IMEI	15
9.14 LOCAL TIME SETTING	15
9.15 RESET HARDWARE	15
9.16 CONFIGURE PARAMETERS BY USB	15
9.17 TCP / UDP SWITCH	16
9.18 SMS MODE	16
9.19 CONFIGURE SMS MONITORING CENTER NUMBER	16
9.20 CONFIGURE GPRS HEARTBEAT PACKAGE INTERVAL	16
9.21 INITIALIZATION	17
<b>10. CAUTIONS</b>	<b>17</b>
<b>11. TROUBLESHOOTING</b>	<b>18</b>

# 1. Specifications

Product name	Wireless data terminal
Model	109
DIM.	85mm x 65mm x 27mm
Weight	188g
Network	GSM/GPRS
Band	850/900/1800/1900Mhz
GPS sensitivity	-165dBm
GPS accuracy	5m
Time To First Fix	Cold status 45s Warm status 35s Hot status 1s
Battery	Chargeable 3.7V 5000mAh Li-ion battery
Storage Temp.	-40°C to +85°C
Operation Temp.	-20°C to +65°C
Humidity	5%--95% non-condensing
Waterproof Grade	IP67

# 2. Hardware Description



USB port can be used for charging and flashing the firmware purpose.

# 3. Quick Charger

This device supports maximum 2A current quick charger.

Charger way: Connect the device to the AC adapter (Output voltage: 5V, current:  $\geq 2A$ ) with the original MICRO USB cable.



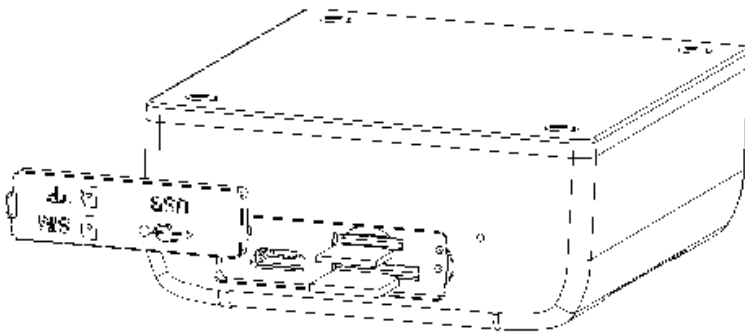
Warning: Please use the original USB cable to charge, if lost the original USB cable, the replacement USB cable is required to carry at least 2.5A.

Please use the manufacturer's original charger and battery; the charge time of the battery is about 7-9 hours.

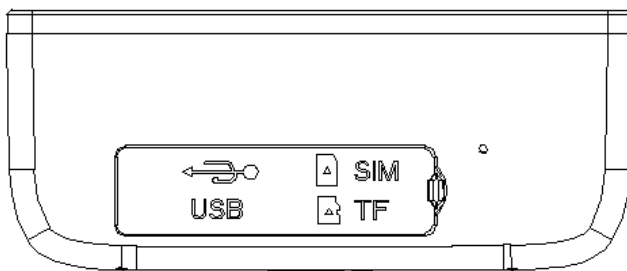
Warning: Lithium batteries contain harmful chemical constituents and may explode, please do not slam, stab or put into the fire.

## 4. Insert SIM card, turn on the device

Attention: Please be sure to open the voice call function, caller display function and data flow function, and PIN code is off, no call forwarding function. The recommended data flow package is not less than 30MB per month.



- ① Open the soft glue plug.
- ② Insert TF card as the picture shows.
- ③ Insert SIM Card as the picture shows, and tracker will be turned on automatically.



- ④ Cover the soft glue plug

After turn on, please bring the device outdoors for the first time to wait for about 10-40 seconds to search for GSM and GPS signals to start work normally.

## 5. Device Status Light

Light	Status	
Power light (Red)	Flash	Low battery
	On	Charging

	Off	Finished charging
GSM light (Green)	On	No GSM signal
	Flash 1 time each second	GSM mode
	Flash 2 times each second	GSM mode and fix to satellites
	Flash 3 times each second	GSM mode, perfect GPS signal
	Flash slowly 1 time each 3 seconds	GPRS mode
	Flash slowly 2 or 3 times each 3 seconds	GPRS mode, fix to satellites with perfect signals

## 6. Mobile APP

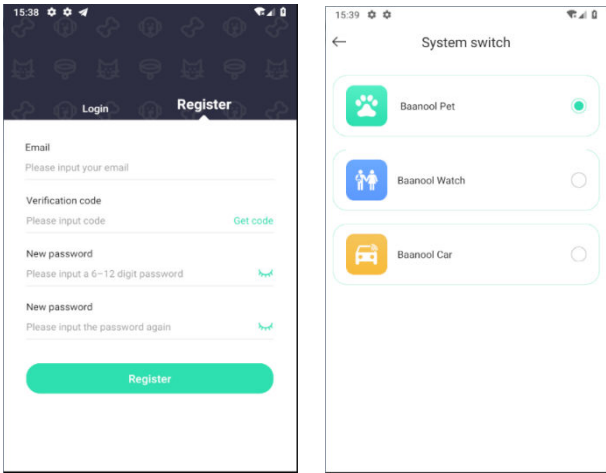
Scan the QR code to download APP



Google Play、App Store、Baidu App Store search “BAANOOL IOT” to download it

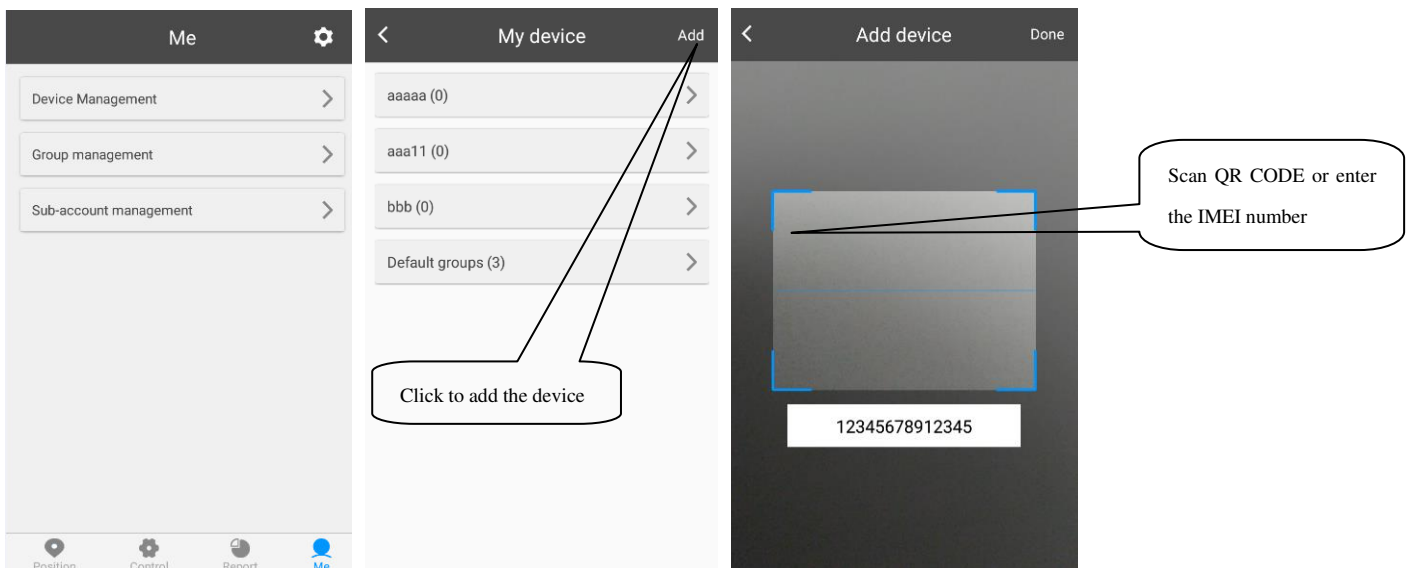
### Register

Open BAANOOL IOT, register a new account and login, Choose “BAANOOL car “to enter it.



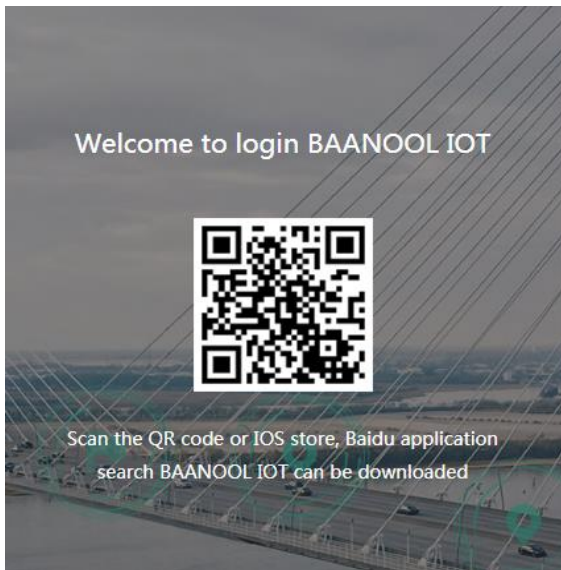
## Bind Device

Click “Me” → “Device Management” → “Add”, scan the QR CODE on the device or enter the IMEI manually to bind the device



## 7. BAANOOL IOT’s Web Version

Open [www.baanooliot.com](http://www.baanooliot.com) , The login account name and password are the same as phone app’s



English

Please enter your account/email

Please enter a password with 6~20 length characters

[Forget password?](#)

Login

No account ? Please register

[I want to experience](#)

**Attention:**

When reading this user manual, you will notice that we have used "+" and "space" between some words;"+" between two words means they should be written together as one word and "space" between two words means you should leave one character space between two words.

## 8. GPRS configuration for live real-time tracking

Set APN, Account user name and password to login web platform

Usually, the device can automatically recognize and select the APN, user name and password of GPRS settings. If the device cannot connect to the web platform, then you need to use the mobile phone text message to configure the settings according to following steps.

### 8.1 APN Setting

APN is an abbreviation for Access Point Name and changes depending on which mobile network you are using. For more information about your local APN, please check with your local wireless carrier.

SMS command: **APN+password+space+local APN**

Tracker response: **APN OK**

Example: **APN123456 CMNET**

Note: 123456 is the default password, please change password on APP or refers to 9.1.

### 8.2 Configure user name and password of GPRS

In the most countries, the user name and password of GPRS are not necessary; therefore, you can ignore this step if it is not necessary for your local network.

For those countries requiring user name and password, please configure as following:

SMS command: **up+password+space+user+space+password**

Tracker response: **user, password ok!**

Example: **up123456 Jonnes 666666**

Note: 123456 means the password of the device, Jonnes means the user name of gprs, and 666666 means password of gprs

## 8.3 Configure domain name and port

Tracker connects to tracker.baanooliot.com 8090 by default. If you need to connect to another domain name, please configure it.

SMS command: **dns+password+space+DNS domain name+space+port**

Tracker response: **dns success!**

Example : **dns123456 tracker.baanooliot.com 8090**

**Note:**

If you want to configure IP instead of DNS, then please send SMS command: “**adminip+password+space+IP+space+port**”

## 8.4 GPRS mode

SMS command: **GPRS+password**

Tracker response: **GPRS OK!** (It means it has been switched to GPRS mode.)

# 9. Function Details

The following setting functions can be set through the APP or web version

## 9.1 Changing Password

**9.1.1** SMS command: **password+oldpassword+space+new password**

Tracker response: **password OK**

**9.1.2** Be sure to keep the new password in mind, you have to flash the firmware to restore the initialized setting in case of losing the new password

**9.1.3** Attention: Make sure the new password is in 6 digits Arabic numbers, otherwise the tracker cannot recognize it



## 9.2 Authorization

Up to 5 numbers can be authorized.

**9.2.1** call the tracker 10 times in succession, the number will be authorize automatically as the first number and tracker response “add master ok”

**9.2.2** SMS command: admin+password+space+mobile phone number ,  
Tracker response: admin ok.

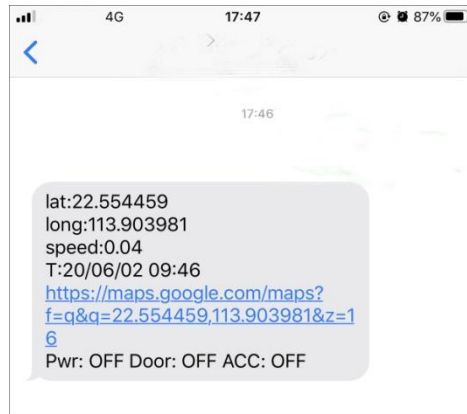
**9.2.3** SMS command: noadmin+password+space+authorized number  
Tracker response: noadmin ok

**9.2.4** If you want to receive these kinds of notification alerts when the trackers moved to another country, you must put the country code before the phone number to authorize it in international format, If there is a “0” before your phone number, please remove the “0”, for example, admin123456 008613322221111, then 13322221111 had been configure to authorization number.

## 9.3 Single Tracking

**9.3.1** If there aren't any authorized numbers set-up, it will reply all calls with a location report; if there are authorized numbers set-up, then it will not respond when an unauthorized number calls it.

**9.3.2** If you call it from authorized phone number, it will hang up and report a real-time location as below:



When it lost fix to satellites, the message will include the last known GPS position and a LAC code of the updated position as well.

**9.3.3 SMS Command:** position+password, The function is the same as 9.3.2

## 9.4 Sleep tracking strategy

Sleep Mode	Description	Standby Time
Sleep by time	It works for 3 minutes for each trigger; GPRS will be online if any alarm has been triggered.	5000*0.9 (Battery self-loss) /1.9mA/24h=98.5 DAYS
Sleep by shock	GPRS will be offline if it is motionless, vibration can wake up the tracker	5000*0.9 (Battery self-loss) /1.9mA/24h=98.5 DAYS
No sleep (Always online)	GPRS is always online	5000/31mA/24h=6.7 DAYS
Deepshock	GSM module shuts down when sleep; calling cannot be reached, vibration can wake it up.	5000*0.85 (Battery self-loss) /0.3mA/24h/365d=1.6 YEARS
Deepschedule	GSM module shuts down when sleep; calling cannot be reached, but it will wake by itself to report its position according to the scheduled time	5000*0.85 (Battery self-loss) /0.3mA/24h/365d=1.6 YEARS

### 9.4.1 Time sleep timing tracking strategy

SMS Command: Sleep+password+space+time+space+030m+001h+005n

The above command means: time sleep mode (If no operations in 3 minutes, GPRS offline

and GPS off, any alarm trigger, call, sms can wake up), reported 30 minutes interval when the device is moving, and every 1 hour when it is stop , and only report 5 times, 005n means limited to 5 times of positioning, \* \*\*n means Unlimited times.

**Time sleep mode is the default mode, but not default tracking strategy.**

Note: The time must be represented by 3 Arabic numerals, the movement interval is at least 10 seconds, and the stop interval is at least 30 minutes (s: seconds, m: minutes, h: hours)

### **9.4.2 Shock sleep timing tracking strategy**

SMS Command: Sleep+password+space+shock+space+030s+001h+005n

The above command means: shock sleep mode (GPRS offline when the device is stop, motion or any alarm trigger, call, sms can wake up), reported 30 seconds interval when the device is moving, and every 1 hour when it is stop , and only report 5 times, 005n means limited to 5 times of positioning, \* \*\*n means Unlimited times.

Note: The time must be represented by 3 Arabic numerals, the movement interval is at least 10 seconds, and the stop interval is at least 30 minutes (s: seconds, m: minutes, h: hours)

### **9.4.3 Shock sleep timing and distance tracking strategy**

SMS command: Sleep+password+space+shock+space+001h+0200d +005n

command means: shock sleep mode (GPRS offline when the device stop, motion or any alarm trigger, call, sms can wake up), report 1 hour interval when the device stop, When the device move, the moving distance reaches 200 meters, it will reported, and only report 5 times.005n is means limited to 5 times of positioning, \* \*\*n means Unlimited times.

Note: The time must be represented by 3 Arabic numerals, the distance must be represented by 4 Arabic numerals, d represents the distance, the distance unit is meters, and the minimum static interval is set to 30 minutes (s: seconds, m: minutes, h: hours)

### **9.4.4 Sleep off timing tracking strategy**

SMS Command: Sleep+password+space+off+space+030s+030m +005n

The above command means: no sleep mode (GPRS is always online), It will update a position every 30s interval when moving, and update a position at 30 minutes interval when motionless, and only 5 times are updated, 005n means 5 times, \*\*\*n means unlimited times.

Note: The time must be represented by 3 Arabic numerals, and the time interval should be set to a minimum of 10 seconds (s: seconds, m: minutes, h: hours)

### **9.4.5 Sleep off timing and distance tracking strategy**

SMS command: Sleep+password+space+off+space+030m +0200d +005n

The above command means: no sleep mode (GPRS is always online), It will update a position at 30min interval when moving, and update a position at 200 meters interval when motionless, and only 5 times are updated, 005n means 5 times, \*\*\*n means unlimited times.

Note: The time must be represented by 3 Arabic numerals, and the moving distance must be represented by 4 Arabic numerals. d represents the distance, the distance unit is meters, and the time interval is set to a minimum of 10 seconds (s: seconds, m: minutes, h: hours)

### **9.4.6 Deepshock sleep timing tracking strategy**

SMS Command: Sleep+password+space+deepshock+space+010s+001h+005n

The above command means: deepshock sleep mode (GSM and GPS will be off when the device is stop, motion or any alarm trigger can wake up), reported 10 seconds interval when the device is moving, and every 1 hour when it is stop , and only report 5 times, 005n means limited to 5 times of positioning, \* \*\*n means Unlimited times.

Note: The time must be represented by 3 Arabic numerals, the movement interval is at least 10 seconds, and the stop interval is at least 30 minutes (s: seconds, m: minutes, h: hours)

#### **9.4.7 Deepschedule sleep timing tracking strategy**

SMS Command: Sleep+password+space+deepschedule+space+030m+001h+005n

The above command means: deepschedule sleep mode (If no operations in 3 minutes, GSM and GPS will be off, any alarm trigger can wake up), reported 30 minutes interval when the device is moving, and every 1 hour when it is stop , and only report 5 times, 005n means limited to 5 times of positioning, \* \*\*n means Unlimited times.

Note: The time must be represented by 3 Arabic numerals, the movement interval is at least 10 seconds, and the stop interval is at least 30 minutes (s: seconds, m: minutes, h: hours)

#### **9.4.8 Cancel tracking strategy**

SMS command: nofix+password, Tracker response: nofix ok

### **9.5 Smart angle updating**

**9.5.1** It will update positions automatically to web platform when the vehicle changes driving direction over a preset angle value to make its trace following the actual road and seem better on the map. This function is only available in GPRS mode.

**9.5.2** SMS command: angle+password+space+angle value, Tracker response: angle ok

**9.5.3** Note: The angle value must be 3 Arabic digits, and the default value is 30 degree.

### **9.6 GPS drift suppression**

**9.6.1** This function is deactivated by default.

SMS command to activate: suppress+password, Tracker response: suppress drift ok.

If you stop driving the vehicle, tracker will stop updating its position and keep sending the same latitude and longitude, and when start to driving, the latitude and longitude will update automatically again.

**9.6.2** SMS command to deactivate: nosuppress+password, Tracker response: nosuppress ok

## **9.7 Location based service (LBS) / Cell-ID tracking**

If the tracker cannot establish a solid GPS Fix, it will calculate its location using Cell-ID GSM locating. In SMS mode, location reports will include the GPS coordinates of the last known positions as well as a LAC code which is the current latest position. If in GPRS mode, tracker will automatically switch to tracking by LBS. and locate directly on the platform map with LBS positioning prompts. The base station positioning information has an error with the actual position, and the error range is related to the strength of the GSM signal.

Note: This function can be used normally in most areas according to GSM signal conditions, but may not be available in some areas.

## **9.8 Listen**

**9.8.1** The default mode is Track mode, dial the device, reply position

**9.8.2** SMS command: listen+password, switch to Listen mode, dial the device, enter call

**9.8.3** SMS command: tracker+password, restore to Track mode

## **9.9 Forwarding incoming SMS messages**

**9.9.1** SMS command: forward+password+space+third party phone number, Tracker response: forward ok

The carrier's number which used to sending notification messages is recommended to set up, tracker will forward the notification message to authorized numbers when carrier send message to remind you to top up your SIM card.

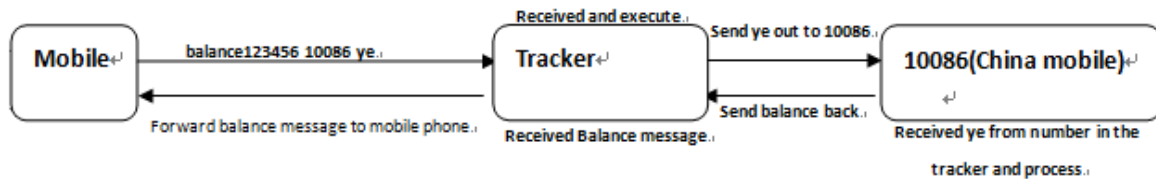
**9.9.2** Cancel: noforward+password

## 9.10 SIM Card Balance Enquiry

SMS command: balance+password+space+phonenumber+space+code

Tracker response: It will forward the code to the specified phone number and return the content from that number.

This function assumes that your GSM network provider has the option where you can check your SIM card's balance by sending a SMS message to a specified number, which is 10086 in this example of China Mobile.



## 9.11 Alarms

### 9.11.1 Low battery alarm

This feature is activated by default, when the battery voltage is close to 3.55V, tracker will send message “low battery + latitude & longitude” to authorized numbers for 2 times at 15 minutes interval.

SMS command to deactivate: lowbattery+password+space+off

Tracker response: lowbattery off ok

Example: lowbattery123456 off

SMS command to activate: lowbattery+password+space+on

Tracker response: lowbattery on ok

Example: lowbattery123456 on

### 9.11.2 Blind area alarm

This feature is deactivated by default, tracker will send SMS notification “No gps+latitude& longitude of the last know position.” to authorized numbers if lost fix to GPS satellites.

SMS command to activate: gpssignal +password+space+on

Tracker response: gpssignal on ok

Example: gpssignal123456 on

SMS command to deactivate: gpssignal +password+space+off

Tracker response: gpssignal off ok

Example: gpssignal123456 off

### 9.11.3 Geo-fence

The Geo-fence feature creates a virtual fence. When the tracker moves out of this virtual fence, SMS notification "stockade!+latitude & longitude" will be sent to the authorized numbers when SMS mode. Geo-fence alarm will be sent to Web when gprs mode.

command to activate: stockade+password+space+latitude, longitude; latitude, longitude

Tracker response: stockade ok!

Example: stockade123456 22.554459, 113.903981; 22.553002, 113.909378

Note: The first latitude & longitude is coordinate of the top left corner of the Geo-fence, and the second latitude & longitude is the coordinate of the bottom right corner.

Command to deactivate: nostockade+password

Example: nostockade123456

### 9.11.4 Movement alarm

When the device stays in one place for 3-10 minutes and confirms that there is a GPS signal, you can send the SMS command "move+password+space+0200" to the device (assuming a range of 200 meters, maximum support four digits, unit: meters), the device Will reply "move ok!". Once the device is out of range, the device will reply the message "move + latitude and longitude" to the authorized number. (The default distance of the device is 200 meters,)

Cancel the setting: Send SMS "nomove+password" to cancel this function setting.

### 9.11.5 Over speed alarm

Send SMS command "speed+password+space+080" to the device (assuming the speed is 80km/h), then the device will reply "speed ok!". When the device runs over 80km/h, the device will send the message " speed+080!+latitude and longitude" to the authorization number. Over speed alarm SMS mode only sends a text message once within 3 minutes, GPRS mode only send once within 3 seconds; the siren sounds for one second when speeding.

Cancel the setting: Send SMS "nospeed+password" to cancel this function setting.

Note: The recommended speed should not be less than 30km/h.If the speed is set lower than this you may get a false alarm due to GPS inaccuracy.

### 9.11.6 Acceleration Sensor Alarm

There is a built-in three axis acceleration sensor in the tracker to detect the movement, tilt and shock. Tracker will send "Sensor alarm + latitude / longitude" to authorized numbers when vibrate

**9.11.6.1** SMS command to activate: shock+password, Tracker response: Shock is activated

**9.11.6.2** SMS command to deactivate: noshock+password, Tracker response: noshock ok

**9.11.6.3** Sensor's sensitivity configuration(First level is default)

**First level:** Alarm will be triggered by slight vibration.

SMS command: **sensitivity+password+space+1**

Tracker response: **sensitivity ok**

**Second level:** Alarm will be triggered by medium vibration.

SMS command: **sensitivity+password+space+2**

Tracker response: **sensitivity ok**

**Third level:** Alarm will be triggered by severe vibration.

SMS command: **sensitivity+password+space+3**

Tracker response: **sensitivity ok**

## 9.12 Check Status

SMS command: check+password

Reply: Battery, GPS signal, GSM signal, GPRS, APN, UP, IP, Port etc

Example: check123456

Tracker response:

Battery: 100%

GPRS: ON/OFF

GPS: OK/NO GPS

GSM Signal: 1-32 (The higher, the better)

APN: cmnet

IP: 104.250.138.146

PORT: 9000

Arm: OFF/ON

## 9.13 Check IMEI

SMS command: imei+password

Tracker response: xxxxxxxxxxxxxxxx (A 15 digits IMEI of your device)

Example: imei123456

## 9.14 Local time setting

Tracker works in the local time zone by default. If you find that the time zone is incorrect, you can configure the time zone

SMS command: time+space+zone+password+space+time zone value

Tracker responds: time ok

Example: time zone123456 8

## 9.15 Reset Hardware


SMS Command: reset+password

Tracker Response: reset ok

Example: reset123456

## 9.16 Configure parameters by USB

Using the USB cable to connect the tracker to a computer and open the configuration file

 user\_config.ini with notepad, and then manually change the parameters and settings according to the tips.



Note: You must enter the correct password of the tracker in the old password field every time when changing the settings; otherwise, the changes won't be successful.

## **9.17 TCP / UDP switch**

SMS command to switch to TCP mode: GPRS+password,0,0 (TCP mode is the default one)

SMS command to switch to UDP mode: GPRS+password,1,1

Tracker response: GPRS OK!

Example: GPRS123456,0,0

GPRS123456,1,1

## **9.18 SMS mode**

Switch to SMS mode will disconnect the GPRS connection for live tracking.

SMS command: SMS+password

Tracker response: SMS OK! ( It means it has been switched to SMS mode.)

Example: SMS123456

## **9.19 Configure SMS monitoring center number**

SMS command: centernum+password+space+phone number

Tracker response: centernum ok

After the SMS monitoring center number is successfully set, the SMS reported by the positioning strategy will be sent to this number.

If the monitoring center number needs to receive the alarm notification message, please set this number as an authorized number too.

Cancel SMS monitoring center number

SMS command: nocenternum+password

Tracker response: nocenternum ok

Example: nocenternum123456

## **9.20 Configure GPRS heartbeat package interval**

The default heartbeat interval to keep GPRS connection alive is 100 seconds; you can change it if necessary, but please be kindly informed that if the time interval is too long, it may cause

GPRS disconnection.

SMS command: **heartbeat+password+space+time interval**

Tracker response: **heartbeat ok**

Example: **heartbeat123456 120**

Note: (123456 means tracker's password, 120 means the interval.)

The minimum interval is 60 seconds, and tracker will continue to send heartbeat every 60 seconds if you configure it less than 60 seconds.

## 9.21 Initialization

If the tracker cannot work properly, you can send command to initialize it to return to default factory settings.

SMS command: **begin+password**

Tracker response: **begin ok**

Example: **begin123456**

## 10. Cautions

Please be sure to follow when using:

1. Keep the tracker used in a dry environment. The humid environment can easily damage internal circuits.
2. Please do not put it in a dusty environment.
3. Do not put the tracker in overheated or overcooled places.
4. Handle carefully. Don't vibrate or shake it violently.
5. Please clean with a dry cloth, do not use chemicals and detergents.
6. Please do not paint the device; this may lead to internal circuit failure.
7. Do not disassemble the device.
8. Please read the user manual carefully before installation and operation, and understand voltage range. Otherwise, it won't work properly or damage the tracker.

## 11. Troubleshooting

Faults	Solution
Fail to turn on	<ol style="list-style-type: none"> <li>1. Please check if the power wiring is correct?</li> <li>2. Please check if the power voltage is correct?</li> </ol>
No GSM signal	<ol style="list-style-type: none"> <li>1. Check whether the SIM card is put in place.</li> <li>2. Whether the SIM card is a GSM network SIM card.</li> <li>3. Don't turn on the PIN code.</li> <li>4. Call forwarding cannot be opened.</li> </ol>
No GPS signal	The device needs to be in an unobstructed position to ensure that it can receive GPS signals normally.
No response for SMS command	<ol style="list-style-type: none"> <li>1. No credit on SIM card.</li> <li>2. The password is incorrect or the format of the SMS command is incorrect.</li> </ol>
No response for a call/No alarm notification message	<ol style="list-style-type: none"> <li>1. Did you have set up the authorized phone number?</li> <li>2. If authorized number exists, did you make the call from an authorized phone number?</li> <li>3. The format of the phone number is incorrect.</li> </ol>