

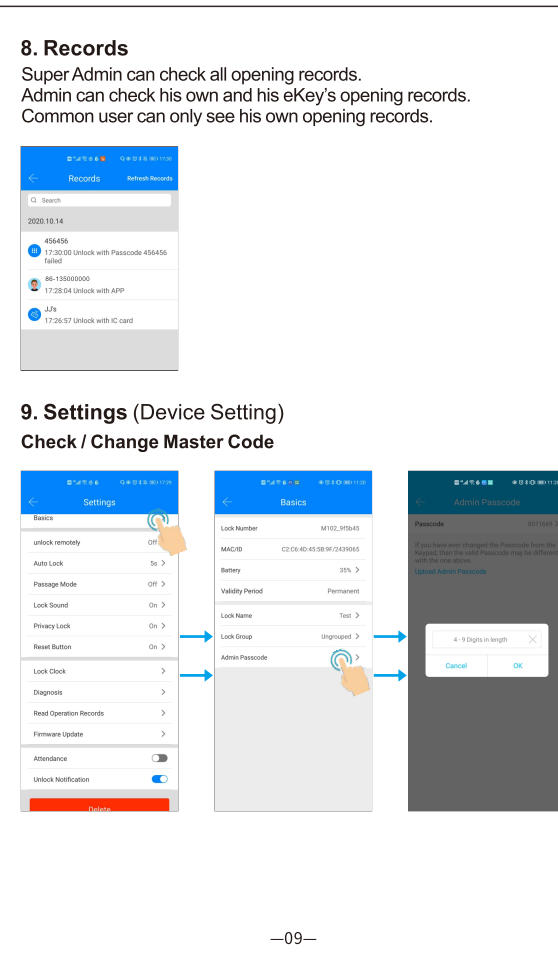
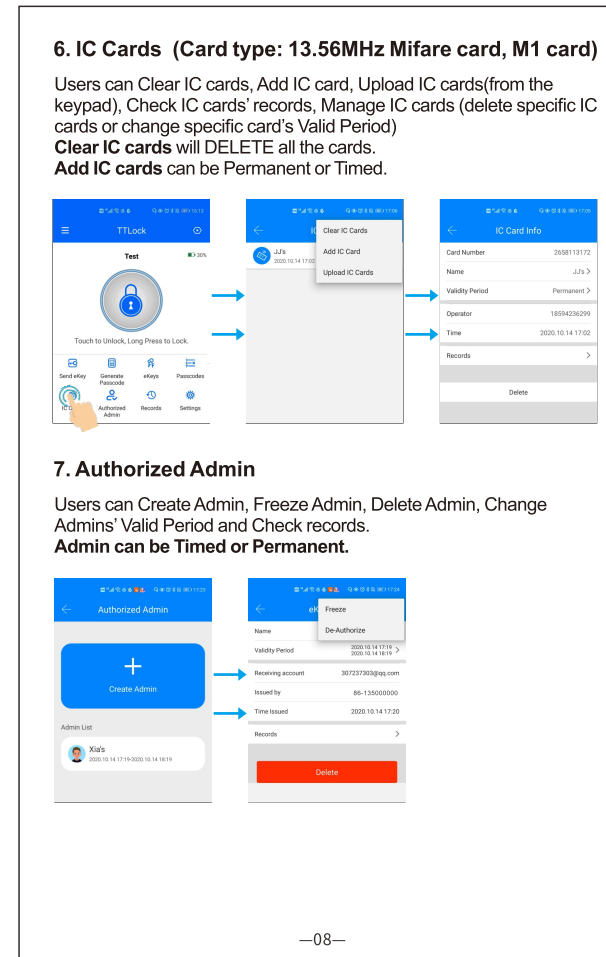
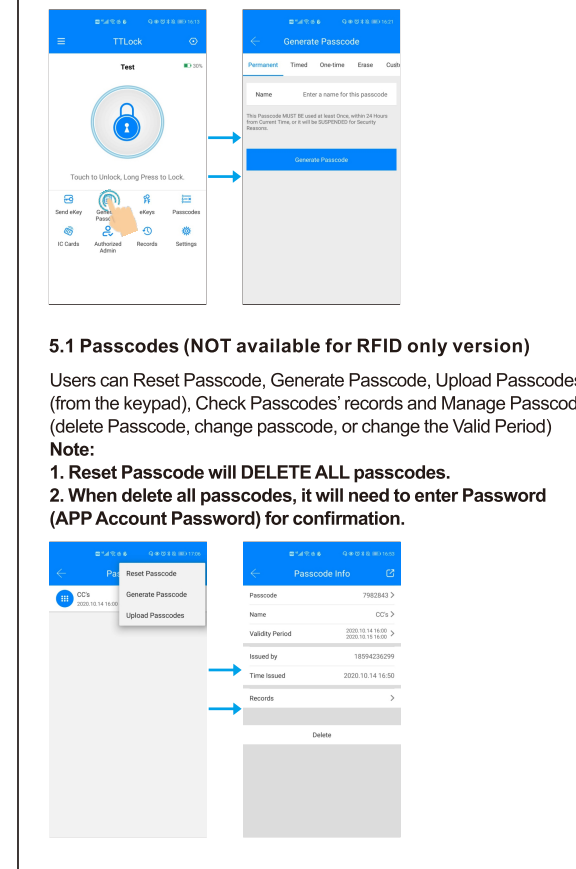
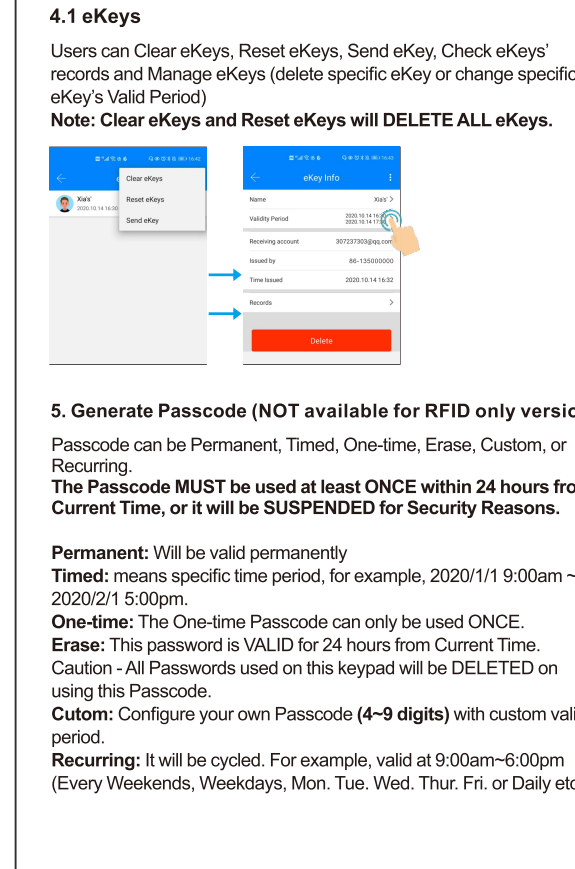
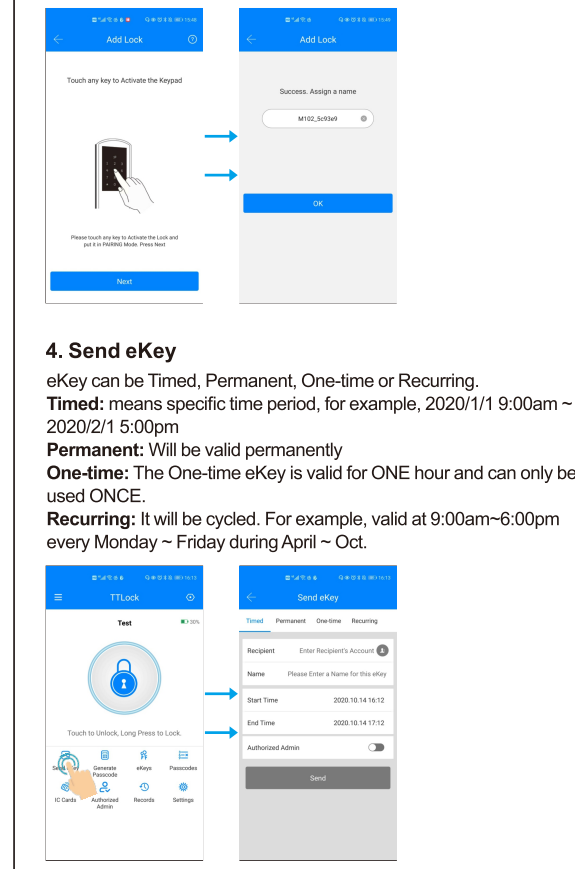
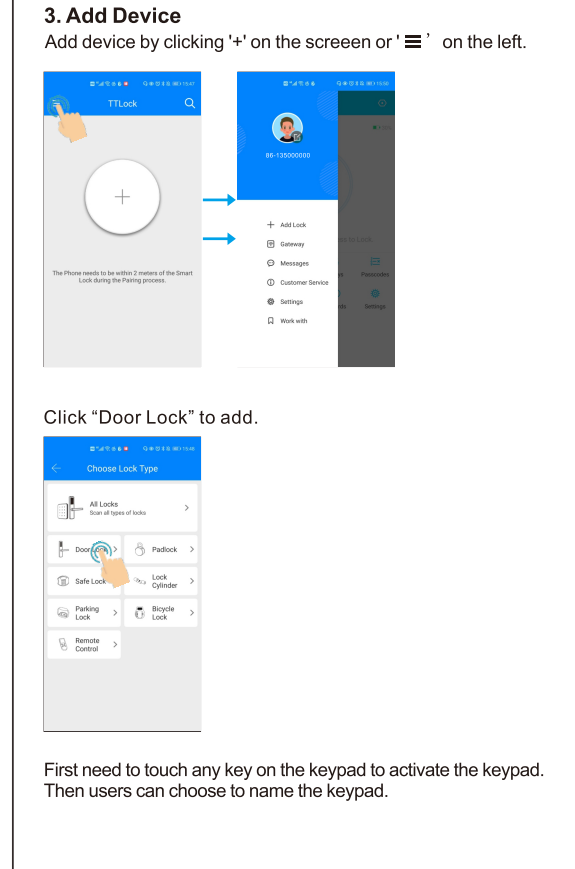
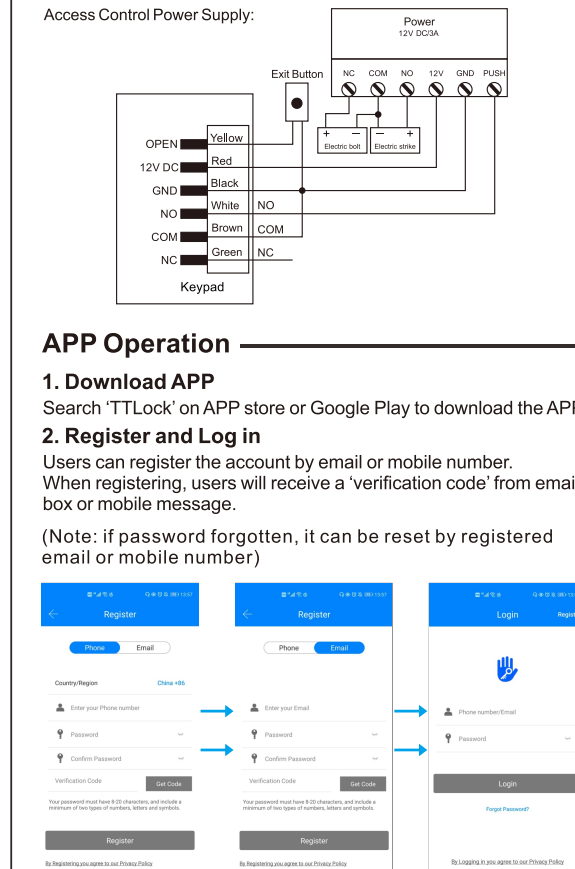
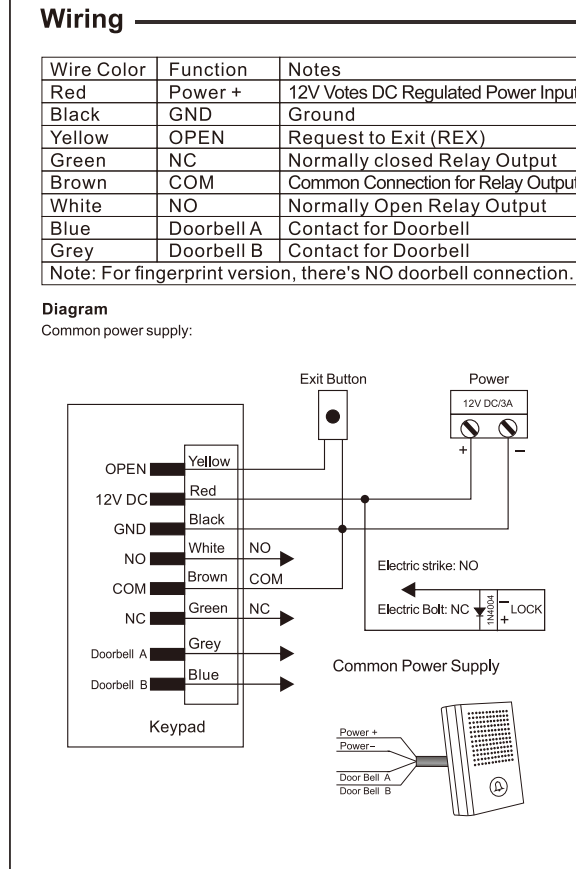
### Introduction

The Keypad uses Nordic 51802 Bluetooth chip as the main control and supports low power Bluetooth (BLE 4.1). It supports managing the users (PIN, E-key, Mifare Card) through the APP, also can use APP to unlock. The keypad supports firmware updates, and software functions can be extended through firmware updates.

APP E-key, PIN, Mifare card users can be specified the expiry date (start time - end time), only within the expiry date can unlock. APP supports multiple languages.

### Specifications

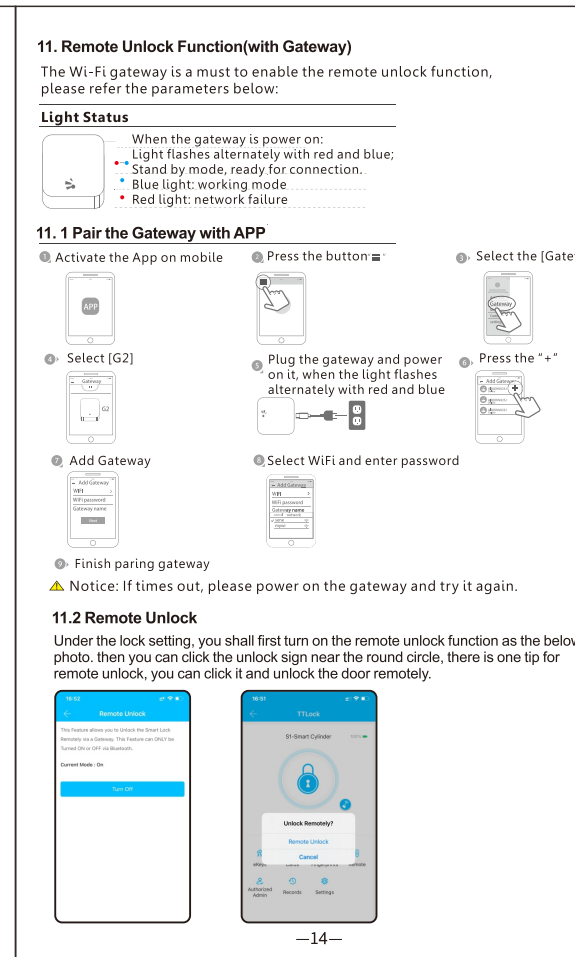
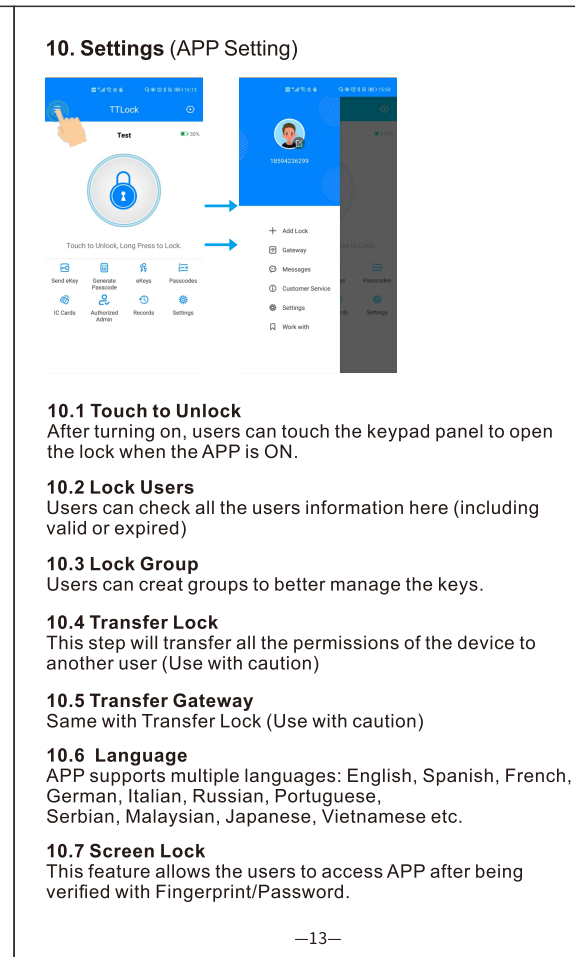
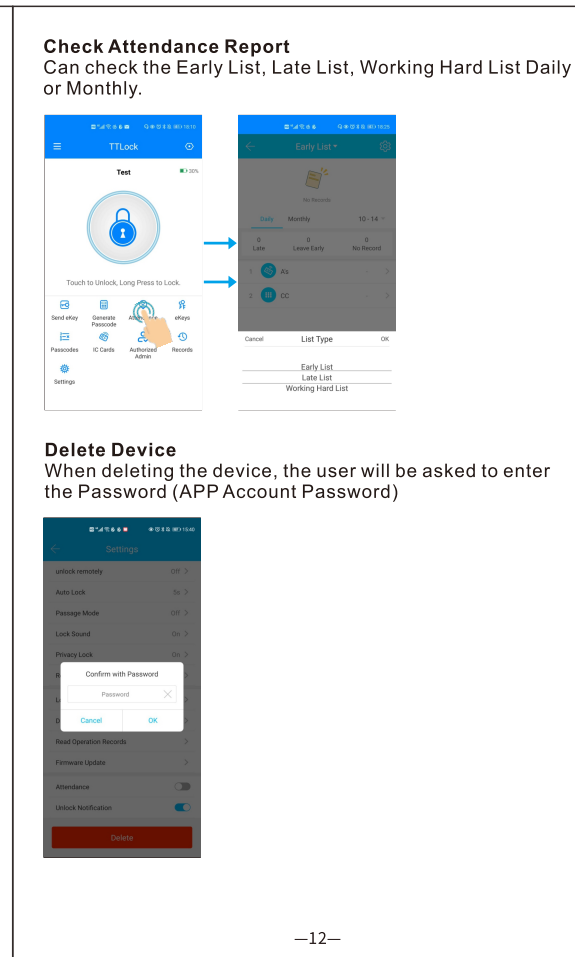
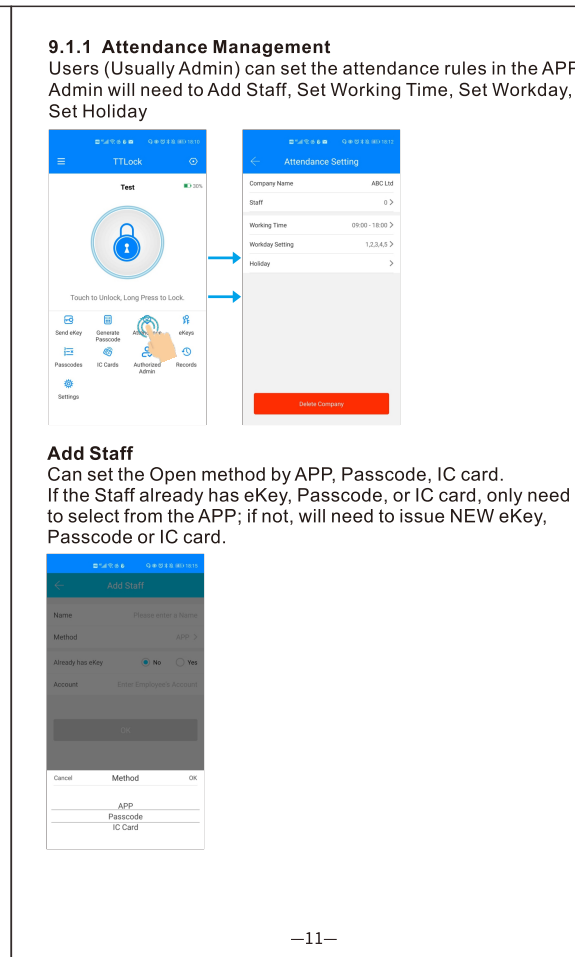
|                           |                                                                                                               |
|---------------------------|---------------------------------------------------------------------------------------------------------------|
| Bluetooth                 | BLE Bluetooth (BLE 4.1)                                                                                       |
| Mobile Phone              | Android 4.3/IOS7.0 above                                                                                      |
| PIN User Capacity         | Custom password : 150 dynamic password: 150                                                                   |
| Card User Capacity        | 1000                                                                                                          |
| Card Type                 | 13.56MHz Mifare card, M1 card                                                                                 |
| Fingerprint User Capacity | 100 (For Fingerprint version only)                                                                            |
| Multi-language            | English, Spanish, French, German, Italian, Russian, Portuguese, Serbian, Malaysian, Japanese, Vietnamese etc. |
| Card Reading Distance     | 2~4 cm                                                                                                        |
| Keypad                    | Capacitive TouchKey                                                                                           |
| Operating Voltage         | 12V DC                                                                                                        |
| Working Current           | ≤80mA                                                                                                         |
| Lock Output Load          | ≤2A                                                                                                           |
| Operating Temperature     | -20°C~+60°C                                                                                                   |
| Operating Humidity        | 0%RH~98%RH                                                                                                    |
| For Outdoor               | Waterproof IP66                                                                                               |
| Physical Colour           | Zinc-Alloy Silver & Black                                                                                     |
| Dimensions                | L145 x W68 x D25(mm) (Wide)<br>L148 x W43.5 x D22(mm) (Slim)                                                  |
| Unit Weight               | 500g (Wide) 330g (Slim)                                                                                       |
| Shipping Weight           | 405g (Wide) 405g (Slim)                                                                                       |



| Basics                 | Basic info about the device                                  |
|------------------------|--------------------------------------------------------------|
| Unlock Remotely        | Available only when using a Gateway (optional)               |
| Auto Lock              | Auto lock time can be set from 5s~60s or custom, default: 5s |
| Passage Mode           | Normally Open Mode                                           |
| Lock Sound             | ON / OFF                                                     |
| Privacy Lock           | Not available                                                |
| Reset Button           | Not available                                                |
| Lock Clock             | Time Calibrating                                             |
| Diagnosis              | Not available                                                |
| Read Operation Records | All records stored                                           |
| Firmware Update        | Firmware update                                              |

### 9.1 Attendance

Before turning on, it will ask the user to create a company first.



### Keypad Operation

| Function                   | Operation on Keypad                                                                                                                                                                           |
|----------------------------|-----------------------------------------------------------------------------------------------------------------------------------------------------------------------------------------------|
| 1. Change Master Code      | - If there is no mobile phone add the keypad device (that's to say, no Super Admin):<br>* 12 # 123456 # (New Master Code) # (New Master Code again) # (Master Code Length: 4-9 digits)        |
| 2. Add Passcode            | * 80 # (Master Code) # (Passcode) # (Passcode again) # (Passcode length: 4-9 digits)                                                                                                          |
| 3. Delete Passcode         | * 71 # (Master Code) # This step will delete all passcodes except the Master Code. Note: After deleting on the device, the user information will be updated only after opening the door once. |
| 4. Change Passcode         | * 10 # (Old Passcode) # (New Passcode) # (New Passcode again) # (Passcode length: 4-9 digits)                                                                                                 |
| 5. Add IC Card             | * 80 # (Master Code) # (Read IC Card)                                                                                                                                                         |
| 6. Delete IC Card          | * 69 # (Master Code) # This step will delete all IC Cards. Note: After deleting on the device, the user information will be updated only after opening the door once.                         |
| 7. Unlock                  | Read (valid Card) to unlock<br>Read (valid passcode #) to unlock                                                                                                                              |
| 8. Temporary Normally Open | When the door is opened (not close yet), press 12#, the keypad will stay in Temporary Normally Open status until an valid user read on the keypad, then the keypad returns to normal status.  |
| 9. Passcode Security       | For high security the keypad allows you to hid your correct Passcode with other numbers up to a max of 16 digits.                                                                             |
| 10. * Key                  | Functions of * key:<br>- Can delete number when input passcode<br>- Can exit from the programming mode<br>- Press * 3 times, can turn off the keypad backlight                                |