

**Multi-function wireless keypad**

**WK3B**

User Manual

## Limited Warranty

1. For any defect in material and workmanship, the original purchaser of the product can:

- 1) Return or ask for a replacement within 7 invoice days.
- 2) Ask for a replacement within 15 invoice days.
- 3) Ask for free repair in 365 invoice days.

2. This warranty does not cover defects caused by modification, alteration, misuse or physical abuse of the product.

### FCC WARNING

This device complies with part 15 of the FCC Rules. Operation is subject to the following two conditions: (1) This device may not cause harmful interference, and (2) this device must accept any interference received, including interference that may cause undesired operation.

Note: This equipment has been tested and found to comply with the limits for a Class B digital device, pursuant to part 15 of the FCC Rules. These limits are designed to provide reasonable protection against harmful interference in a residential installation. This equipment generates, uses and can radiate radio frequency energy and, if not installed and used in accordance with the instructions, may cause harmful interference to radio communications. However, there is no guarantee that interference will not occur in a particular installation. If this equipment does cause harmful interference to radio or television reception, which can be determined by turning the equipment off and on, the user is encouraged to try to correct the interference by one or more of the following

- Reorient or relocate the receiving antenna.
- Increase the separation between the equipment and receiver.
- Connect the equipment into an outlet on a circuit different from that to which the receiver is connected.
- Consult the dealer or an experienced radio/TV technician for help.

Note: The Grantee is not responsible for any changes or modifications not expressly approved by the party responsible for compliance. Such modifications could void the user's authority to operate the equipment.

The device has been evaluated to meet general RF exposure requirement. This equipment complies with FCC's RF radiation exposure limits set forth for an uncontrolled environment. This device and its antenna(s) must not be co-located or conjunction with any other antenna or transmitter.

### Disclaimer:

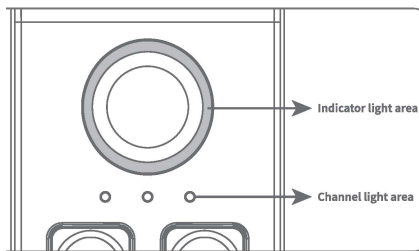
We continuously optimize products as new technologies and features are developed. For this reason, we reserve the right to make alterations to the products without prior notice.

## Firmware upgrades

\* When you want to restore the multi-function wireless keypad to the factory settings, you can follow the following method:

1. Enter \*529# on the multi-function wireless keypad to let the keypad enter the configuration mode;
2. Open the APP near the keypad, click any bound keypad lock, select "Settings" and "Wireless keypad", select the keypad and click "to upgrade", and then complete the operation according to the prompts of the APP.

## Sound and light tips illustration



### Enter configuration mode

The indicator light turn blue breathing effect

### Configuration success

The indicator light stays green for 2 seconds,The buzzer sounds long once

### Unlock success

The indicator light stays green for 2 seconds,The buzzer sounds long once

### Failed to identify / unlock

The indicator light stays green for 2 seconds,The buzzer bursts short for 4 times

### Connect the door lock

The corresponding channel light flashes

### Switch channel

The corresponding channel light is always on

### Other error tips

The indicator light stays red for 2 seconds,The buzzer bursts short for 4 times

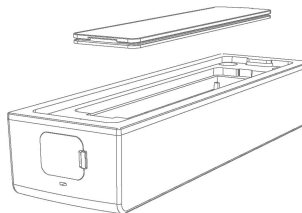
### Low power

The indicator light turn red and flash 4 times,The buzzer bursts short for 4 times

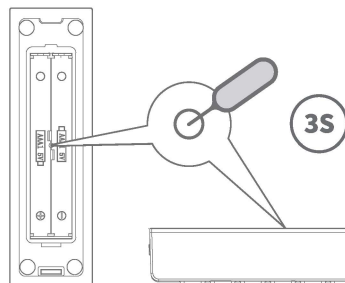
## Restore factory settings

\* When you want to restore the multifunctional wireless keypad to the factory settings, you can follow the following method:

**1. Remove the keyboard battery compartment cover plate;**



**2. Use a thimble to insert into the middle of the battery compartment to reset the key hole, long press the reset button for 3 seconds, hear the "beep" twice, and complete the reset.**



# Function introduction

## 1.Password unlock

- Any password that has been added to the lock with app can be used directly on the multifunctional wireless keypad added to the lock.

\* Before unlocking the password, check that the current operation channel of the multifunctional wireless keypad is on the lock communication channel to be unlocked, otherwise use the keypad channel switch command `** 1 #` or `** 2 #` or `** 3 #` to the communication channel in which the lock need unlock.

## 2.IC card unlock

- Add IC card: need to use the keypad to switch channel instructions `** 1 #` or `** 2 #` or `** 3 #` to switch the keypad communication channel to add the IC card lock channel, if the keypad is currently in the IC card lock channel, do not need to switch. According to the APP prompt on the lock swipe card to add.

\*Only when the smart lock itself does not support IC card and adds IC card to the multi-function wireless keypad, otherwise the IC card must be added through the smart lock .

- Use IC card: when the lock supports IC card unlock, the same IC card supports in the smart lock and multi-function wireless keypad swipe card unlock.

## 3.Fingerprint unlock

- Add fingerprint: you need to use the keypad switch channel instruction `** 1 #` or `** 2 #` or `** 3 #` to switch the keypad communication channel to the channel where the fingerprint lock is to be added. If the keypad is currently in the channel where the fingerprint lock is to be added, there is no need to switch. After the APP prompts that the lock is successfully connected, touch the fingerprint sensor with your finger, wait for the selected channel light to be on, and then enter the fingerprint according to the APP prompt.

\* When the keypad is only bound to a smart lock, there is no need to input the switching channel instruction `** 1 #` when adding the fingerprint;

\* Each fingerprint can only be added once, and the multi-function keypad does not support the same fingerprint being added to multiple locks, please pay attention to the subsequent product firmware upgrades;

\* When adding a fingerprint, if the keyboard does not light up the blue indicator light, any finger is required to trigger the fingerprint sensor.

- Use fingerprint unlocking: The fingerprint added through the keypad can only be unlocked by the fingerprint module on the keypad, and can not be unlocked by the fingerprint module on the smart lock.

Similarly: Fingerprints entered through smart locks are also not available on the keypad.

# Add / remove multifunctional wireless keypad for locks

## 1. The multi-function keypad enters the configuration mode

- When the multi-function keypad is not added by any lock, after installing the battery, press any button to enter the configuration mode;
- When the multi-function keypad has been added by any lock and has not reached the upper limit of the lock addition (3 locks), you need to enter " \*529#\*\*\*\*\*#", and "\*\*\*\*\*" is the administrator password of any bound smart lock, so that the wireless keypad can enter the configuration mode.

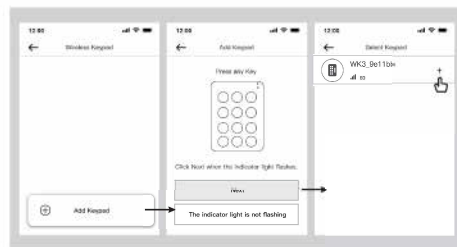
## 2. Lock adds a multi-function wireless keypad

- After the keypad enters the configuration mode, find the lock that supports the wireless keypad in the APP, click "Settings", "Wireless keypad" and "Add a wireless keypad", and then complete the operation according to the prompts of the APP.

\* There can be only one wireless keypad for each smart lock, after which new wireless keypad can be added. A multifunctional wireless keypad can be added by 3 locks at the same time. If the APP will have error notification, please delete the added wireless keypad from the lock, and then try to add the keypad to the new lock.

## 3. Lock unbind multi-function wireless keypad

- After the keypad enters the configuration mode, find the lock that supports the wireless keypad in the APP, click "Settings" and "wireless keypad" to select to delete the "wireless keypad", swipe left or long tap the keypad banner and tap "Delete", and then follow the operation according to the prompts of the APP.



## Multi-function wireless keypad function introduction

\* If the installation surface is smooth and smooth materials such as ceramic tiles, stone materials and wood boards. Mount plate's double-sided tape can be used to paste the mounting plate directly on the installation surface, and then the multi-functional keypad can be installed on the mounting plate with anti-dismantling screw.

\* If the installation surface is rough, install as follows:

**1. Draw the positioning line and make holes in the appropriate position (As shown in Figure 1);**

**2. Fix the mounting plate with screws (No need to use double-side tape) and use the expansion tube if necessary (As shown in Figure 1);**

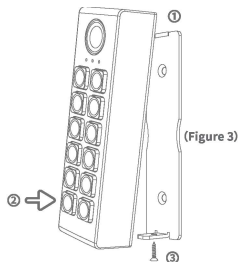


(Figure 1)



(Figure 2)

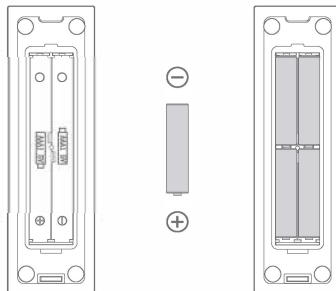
3. Please apply downward force to hook the upper end of the keypad onto the groove at the top of the mounting plate, then push the keypad firmly toward the mounting plate. Ensure the anti-dismantling structure is fully inserted into the keypad, and finally secure it with anti-dismantling screws. Once the anti-dismantling structure of the mounting plate is completely inserted, the anti-dismantling alarm function will be automatically activated (As shown in Figure 3).



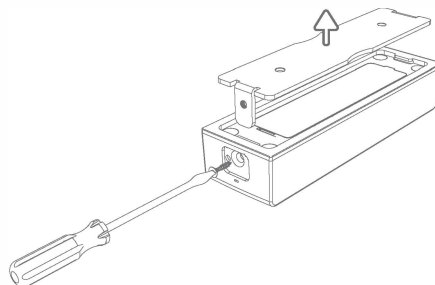
(Figure 3)

## Battery Installation

1. Open the multi-function wireless keypad battery compartment cover, you can install the battery according to the positive and negative electrode identification;



2. If the multi-function keypad is installed on the mounting plate, you need to remove the anti-disassembly screw with a screwdriver, and then remove the keypad for battery replacement.



## Product Parameter

Model:	WK3
Dimensions:	L139mm×W42mm×T28mm
Bluetooth Standard:	Bluetooth 5.4 BLE
Supporting systems:	Android 4.3/IOS7.0 above
Power supply:	4 AAA
Stand-by current:	≈20 uA
Working voltage:	6V
Working temperature:	-20~50°C
Maximum number of supporting fingerprints:	100
Maximum number of supporting bonding locks:	

\*Multi-function wireless keypad supports the password and the capacity of cards, determined by the smartlock bound to the multi-function wireless keypad.

## Packing list

Multi-function wireless keypad	×1
Mounting plate with double-sided tape	×1
User Manual	×1
Anti-dismantling screw	×1
Expansion screw suit	×2

After opening the package, please confirm that the accessories are complete.

---

## Preface

---

Dear users, thank you for buying this product. To further understand the product, please read this manual carefully before use. Please consult the purchased dealer for the installation and commissioning not recorded in the installation manual. Have a happy experience!

## Product profile

---

Multi-function wireless keypad WK 3 also supports "password, IC card, fingerprint" unlock function, a single multi-function wireless keyboard can be added by three different smart locks at the same time. The currently operating smart lock can be distinguished by the slot indicator light on the keyboard.



Password  
unlock



IC card  
unlock



Fingerprint  
unlock



Supports  
3 smart Lock